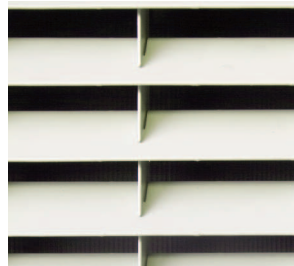


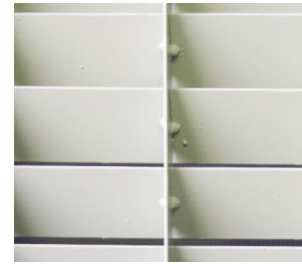
Empress Steel Louvred Doors - TUFF-VENT

Fully CE compliant.
Tested to EN14351-1 product compliant standard

The "TUFF-VENT" doorset offers the maximum free airflow whilst maintaining security.
Side panels and overpanels can be manufactured to make up large openings where large doors may be impractical.



Front Detail



Rear Detail

DOOR LEAF

Production Sizes: "TUFF_VENT" doors are manufactured in 1000 x 2100mm and 2000 x 2100mm sizes.

Thickness: A standard 2mm steel louvre vane is used throughout, welded at every junction.

Material: 2mm galvanised steel sections as standard.

Construction: Constructed using hollow metal standardised sections.

DOOR FRAME

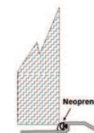
Construction: Fully welded construction with 4no. adjustable fixing feet per jamb, variable sub-frame supplied as standard to accommodate site tolerance of -0/+30mm.
The frame is fitted with 4no. surface mounted adjustable hinges, painted to match door.

Opening: Single Swing Latched as standard. Other combinations available.

THRESHOLD

Standard: 12.5mm 564A Aluminium (DDA compliant)

Click on images for full details.



FINISHES

Standard: Polyester Powder Coating from standard colour range.

FREE AIRFLOW

Calculated on a 1000 x 2100 over frame door a free area of 55% is achieved (based on the area of louvres only this equates to 72%).

OPTIONS

The "Tuff-Vent" grid is also available as a panel to fit FDA doors in two standard sizes 457 x 457mm and 457 x 1524 sizes giving approximately 0.15m² and 0.5m² free area respectively.



TUFF-VENT

