

Empress Steel Louvred Doors - VENT-DOR

Fully **CE** compliant.
Tested to EN14351-1 product compliant standard

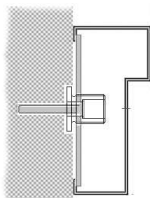


DOOR LEAF

- Thickness:** 74mm
- Material:** Aluminium extrusions type 6063-T6 to BS1474 having a minimum thickness of 1.6mm, wide variety of colours and finishes available.
- Construction:** The louvre blades are inclined at 45° and mounted at 50mm centres within a 74mm deep angle frame, which is mounted on a box section sub-frame for rigidity. An optional galvanised bird & vermin mesh can be supplied.

DOOR FRAME

- Construction:** Folded from 1.6mm Zintec/Aluzinc. Screw and tab construction with 4no. adjustable fixing feet per jamb, variable sub-frame supplied as standard to accommodate site tolerance of -0/+30mm. The frame is fitted with 3no. Class 13 stainless steel hinges with 2no. security dog bolts.
- Profile:**

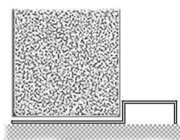


Type B

[Click on image for full details.](#)

THRESHOLD

- Standard:** 15mm rebated threshold.



Standard

[Click on image for full details.](#)

FINISHES

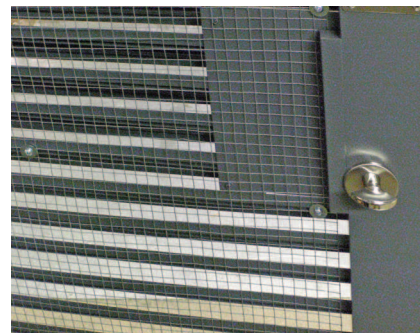
- Standard:** Polyester Powder coated from Standard colour range.
- Optional:** Polyester Powder Coating from non-standard colour range.

SIZES

- Size:** Doors are custom manufactured in 10mm increments for single openings 690mm to 1100mm and double openings 1290mm to 2300mm, at heights up to 2500mm. Over these sizes fully louvred performance can be achieved by custom design. Contact the Sales office for special configurations and finishes.



Typical lock and handle arrangement



Optional bird & vermin mesh

FULLY LOUVRED



PANEL ARRANGEMENTS

- Construction:** Side and over panels can be supplied.
- Sizes:** Side panels are available up to 1100mm wide x 2500mm high.
Over panels are available up to 2500mm (single door) or 2200mm (double door).
- Options:** Hinged or removeable panels are available. Also combinations to create enclosures.
Please consult the Sales office with specific requirements.

